

Number of cases and incidence rates by sex: 2005-2009

Non-Hodgkin's lymphoma (C82-C85)

Sex	Number of cases	Average number of cases per year	Percentage of all cancers ex. NMSC	Crude rate per 100,000	European age-standardised incidence rate per 100,000 (95% CI)	World age-standardised incidence rate per 100,000 (95% CI)	Odds of developing the disease before age 75 = 1 in:
Male	738	148	3.7	17.1	16.5 (15.3,17.7)	11.9 (11.0,12.8)	73.3
Female	726	145	3.7	16.2	13.5 (12.5,14.5)	9.6 (8.9,10.4)	87.8
All persons	1,464	293	3.7	16.7	14.9 (14.1,15.6)	10.7 (10.1,11.3)	80.2

NOTES:

NMSC: Non-melanoma skin cancer

CI: Confidence interval

**Number of cases and incidence rates by sex and year of diagnosis
Non-Hodgkin's lymphoma (C82-C85)**

Male

Year of diagnosis	Number of cases	Percentage of all cancers ex. NMSC	Crude rate per 100,000 males	European age standardised incidence rate per 100,000 males (95% CI)	World age standardised incidence rate per 100,000 males (95% CI)
1993	136	4.4	17.0	18.6 (15.4,21.7)	13.7 (11.3,16.1)
1994	105	3.4	13.1	14.5 (11.7,17.3)	10.6 (8.5,12.7)
1995	119	3.9	14.8	16.4 (13.4,19.4)	11.7 (9.5,13.9)
1996	126	4.0	15.5	16.7 (13.8,19.7)	12.0 (9.9,14.2)
1997	127	4.2	15.6	16.6 (13.7,19.5)	11.9 (9.8,14.1)
1998	119	3.8	14.5	15.7 (12.9,18.6)	11.5 (9.3,13.6)
1999	113	3.7	13.8	14.5 (11.8,17.2)	10.7 (8.7,12.8)
2000	136	4.4	16.6	17.3 (14.4,20.2)	12.7 (10.4,14.9)
2001	116	3.5	14.1	14.5 (11.8,17.1)	10.5 (8.5,12.4)
2002	128	3.9	15.4	16.1 (13.3,18.9)	11.8 (9.7,13.9)
2003	132	3.8	15.8	16.1 (13.3,18.9)	11.6 (9.5,13.6)
2004	137	3.8	16.4	16.2 (13.4,18.9)	11.1 (9.2,13.0)
2005	130	3.6	15.4	14.9 (12.3,17.4)	10.6 (8.7,12.5)
2006	138	3.7	16.2	15.8 (13.1,18.4)	11.2 (9.2,13.2)
2007	141	3.5	16.4	16.0 (13.4,18.7)	11.7 (9.7,13.7)
2008	154	3.7	17.7	17.1 (14.3,19.8)	12.3 (10.3,14.4)
2009	175	4.1	19.9	18.8 (16.0,21.6)	13.5 (11.4,15.6)

Female

Year of diagnosis	Number of cases	Percentage of all cancers ex. NMSC	Crude rate per 100,000 females	European age standardised incidence rate per 100,000 females (95% CI)	World age standardised incidence rate per 100,000 females (95% CI)
1993	103	3.2	12.3	11.3 (9.0,13.5)	8.0 (6.3,9.7)
1994	117	3.8	13.9	12.8 (10.3,15.2)	9.0 (7.3,10.8)
1995	96	3.0	11.4	10.0 (7.9,12.0)	6.9 (5.4,8.4)
1996	121	3.7	14.2	12.3 (10.0,14.6)	8.7 (7.0,10.5)
1997	117	3.6	13.7	11.8 (9.5,14.0)	8.3 (6.6,9.9)
1998	143	4.3	16.6	15.3 (12.7,18.0)	11.6 (9.4,13.7)
1999	136	4.1	15.8	13.5 (11.1,15.9)	9.4 (7.7,11.1)
2000	137	4.0	15.9	14.2 (11.7,16.6)	10.3 (8.4,12.2)
2001	140	4.2	16.2	13.7 (11.3,16.1)	9.6 (7.8,11.4)
2002	125	3.6	14.4	12.3 (10.0,14.5)	8.7 (7.0,10.4)
2003	130	3.6	14.9	12.3 (10.1,14.5)	8.5 (6.9,10.1)
2004	143	3.9	16.4	13.0 (10.8,15.2)	9.1 (7.4,10.7)
2005	140	3.8	15.9	13.0 (10.8,15.3)	9.2 (7.6,10.9)
2006	119	3.2	13.4	11.0 (8.9,13.1)	7.7 (6.2,9.3)
2007	166	4.3	18.5	16.0 (13.5,18.6)	11.6 (9.7,13.5)
2008	135	3.3	14.9	12.1 (10.0,14.3)	8.7 (7.1,10.3)
2009	166	3.9	18.2	15.1 (12.7,17.5)	10.9 (9.1,12.7)

All persons

Year of diagnosis	Number of cases	Percentage of all cancers ex. NMSC	Crude rate per 100,000 persons	European age standardised incidence rate per 100,000 persons (95% CI)	World age standardised incidence rate per 100,000 persons (95% CI)
1993	239	3.8	14.6	14.5 (12.6,16.4)	10.6 (9.2,12.1)
1994	222	3.6	13.5	13.5 (11.7,15.4)	9.8 (8.4,11.2)
1995	215	3.5	13.0	12.9 (11.1,14.6)	9.1 (7.8,10.4)
1996	247	3.8	14.9	14.2 (12.4,16.1)	10.2 (8.9,11.6)
1997	244	3.9	14.6	14.0 (12.2,15.8)	10.0 (8.6,11.3)
1998	262	4.1	15.6	15.5 (13.6,17.4)	11.5 (10.0,13.0)
1999	249	3.9	14.8	14.1 (12.3,15.9)	10.1 (8.8,11.5)
2000	273	4.2	16.2	15.6 (13.7,17.5)	11.4 (10.0,12.9)
2001	256	3.9	15.2	14.1 (12.4,15.9)	10.1 (8.7,11.4)
2002	253	3.7	14.9	14.1 (12.3,15.8)	10.2 (8.8,11.5)
2003	262	3.7	15.4	14.1 (12.3,15.8)	10.0 (8.7,11.3)
2004	280	3.9	16.4	14.5 (12.7,16.2)	10.0 (8.8,11.3)
2005	270	3.7	15.7	13.9 (12.2,15.6)	9.9 (8.7,11.2)
2006	257	3.4	14.8	13.1 (11.5,14.7)	9.3 (8.1,10.5)
2007	307	3.9	17.5	16.0 (14.2,17.8)	11.6 (10.3,13.0)
2008	289	3.5	16.3	14.5 (12.8,16.2)	10.4 (9.2,11.7)
2009	341	4.0	19.1	16.8 (14.9,18.6)	12.1 (10.7,13.5)

NOTES:

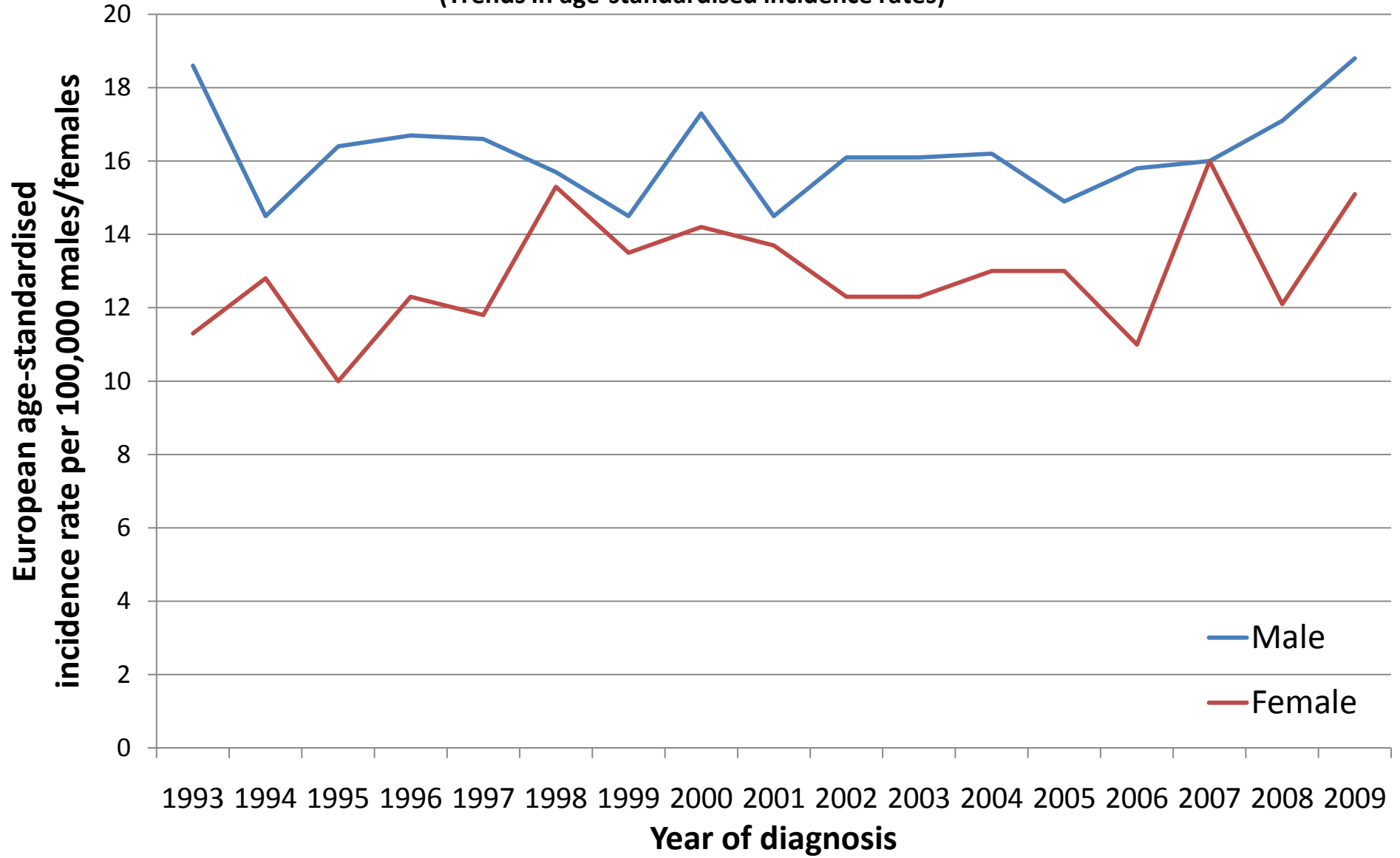
NMSC: Non-melanoma skin cancer

CI: Confidence interval

Non-Hodgkin's lymphoma (C82-C85) (Trends in number of cases per year)



Non-Hodgkin's lymphoma (C82-C85) (Trends in age-standardised incidence rates)



NOTES

European Age Standardised Incidence Rate

The incidence rate per 100,000 persons that has been adjusted to take account of different age structures between geographic areas or time periods. This is done by adopting the European standard as a reference population. The EASIR can be considered to be the number of cases per 100,000 persons occurring in the population if the population possessed the same age structure as the European standard population.

World Age Standardised Incidence Rate

As for the European age-standardised rate but using the World standard population.

Confidence Interval

The range of values calculated to have a specified (usually 95%) probability of containing the true value of an observation. Thus the 95% confidence interval for a rate is the range of values within which there is a 95% probability of finding the true value for the rate.