

## Number of cases and incidence rates by sex: 2005-2009

### Leukaemia (C91-C95)

Sex	Number of cases	Average number of cases per year	Percentage of all cancers ex. NMSC	Crude rate per 100,000	European age-standardised incidence rate per 100,000 (95% CI)	World age-standardised incidence rate per 100,000 (95% CI)	Odds of developing the disease before age 75 = 1 in:
Male	499	100	2.5	11.6	11.1 (10.1,12.1)	8.2 (7.4,9.0)	125.2
Female	389	78	2.0	8.7	7.1 (6.3,7.8)	5.7 (5.0,6.3)	192.9
All persons	888	178	2.3	10.1	8.8 (8.2,9.4)	6.8 (6.3,7.3)	153.5

#### NOTES:

NMSC: Non-melanoma skin cancer

CI: Confidence interval

**Number of cases and incidence rates by sex and year of diagnosis**  
**Leukaemia (C91-C95)**

**Male**

Year of diagnosis	Number of cases	Percentage of all cancers ex. NMSC	Crude rate per 100,000 males	European age standardised incidence rate per 100,000 males (95% CI)	World age standardised incidence rate per 100,000 males (95% CI)
1993	93	3.0	11.7	12.4 (9.8,14.9)	9.6 (7.6,11.7)
1994	102	3.3	12.7	13.4 (10.7,16.0)	10.8 (8.6,13.1)
1995	91	3.0	11.3	11.9 (9.4,14.3)	8.8 (6.9,10.8)
1996	78	2.5	9.6	10.1 (7.8,12.4)	7.7 (5.9,9.6)
1997	104	3.4	12.8	13.3 (10.7,15.9)	10.5 (8.3,12.6)
1998	104	3.3	12.7	13.0 (10.4,15.5)	9.5 (7.5,11.4)
1999	93	3.1	11.4	11.9 (9.4,14.3)	9.1 (7.1,11.0)
2000	101	3.2	12.3	12.5 (10.0,15.0)	9.4 (7.4,11.3)
2001	85	2.6	10.3	10.7 (8.4,13.0)	8.0 (6.2,9.8)
2002	104	3.1	12.5	12.8 (10.3,15.2)	9.9 (7.9,12.0)
2003	69	2.0	8.3	8.5 (6.5,10.5)	6.5 (4.9,8.2)
2004	97	2.7	11.6	11.4 (9.1,13.7)	8.9 (7.0,10.8)
2005	97	2.7	11.5	11.5 (9.2,13.8)	8.7 (6.9,10.5)
2006	92	2.4	10.8	10.3 (8.1,12.4)	7.5 (5.8,9.1)
2007	97	2.4	11.3	11.1 (8.8,13.3)	8.6 (6.7,10.5)
2008	114	2.7	13.1	12.1 (9.9,14.4)	8.6 (6.9,10.3)
2009	99	2.3	11.3	10.7 (8.6,12.8)	7.7 (6.1,9.3)

**Female**

Year of diagnosis	Number of cases	Percentage of all cancers ex. NMSC	Crude rate per 100,000 females	European age standardised incidence rate per 100,000 females (95% CI)	World age standardised incidence rate per 100,000 females (95% CI)
1993	65	2.0	7.8	6.9 (5.2,8.7)	5.8 (4.2,7.4)
1994	53	1.7	6.3	5.4 (3.9,7.0)	4.7 (3.2,6.2)
1995	75	2.4	8.9	7.7 (5.8,9.5)	6.1 (4.5,7.6)
1996	77	2.4	9.0	8.2 (6.3,10.1)	6.9 (5.2,8.7)
1997	89	2.7	10.4	9.0 (7.0,10.9)	7.4 (5.6,9.2)
1998	66	2.0	7.7	6.8 (5.1,8.5)	5.4 (3.9,6.9)
1999	60	1.8	7.0	5.6 (4.1,7.0)	4.4 (3.0,5.7)
2000	71	2.1	8.2	6.9 (5.2,8.5)	5.5 (4.0,6.9)
2001	58	1.8	6.7	5.3 (3.8,6.7)	4.1 (2.8,5.3)
2002	77	2.2	8.9	7.0 (5.3,8.7)	5.2 (3.8,6.6)
2003	64	1.8	7.4	6.3 (4.7,7.9)	5.2 (3.8,6.7)
2004	72	2.0	8.2	6.9 (5.2,8.6)	5.7 (4.1,7.3)
2005	85	2.3	9.7	7.6 (5.9,9.3)	5.9 (4.4,7.4)
2006	86	2.3	9.7	8.1 (6.3,10.0)	6.8 (5.0,8.5)
2007	66	1.7	7.4	6.1 (4.5,7.6)	4.6 (3.3,5.9)
2008	79	1.9	8.7	7.1 (5.5,8.8)	5.8 (4.3,7.3)
2009	73	1.7	8.0	6.5 (4.9,8.0)	5.2 (3.8,6.6)

**All persons**

Year of diagnosis	Number of cases	Percentage of all cancers ex. NMSC	Crude rate per 100,000 persons	European age standardised incidence rate per 100,000 persons (95% CI)	World age standardised incidence rate per 100,000 persons (95% CI)
1993	158	2.5	9.7	9.2 (7.7,10.7)	7.5 (6.2,8.7)
1994	155	2.5	9.4	8.8 (7.4,10.2)	7.5 (6.2,8.8)
1995	166	2.7	10.1	9.4 (7.9,10.9)	7.3 (6.0,8.5)
1996	155	2.4	9.3	8.8 (7.3,10.2)	7.1 (5.9,8.4)
1997	193	3.1	11.5	10.9 (9.3,12.5)	8.8 (7.4,10.2)
1998	170	2.6	10.1	9.3 (7.8,10.7)	7.1 (5.9,8.3)
1999	153	2.4	9.1	8.3 (6.9,9.6)	6.5 (5.3,7.6)
2000	172	2.6	10.2	9.3 (7.9,10.7)	7.2 (6.0,8.4)
2001	143	2.2	8.5	7.6 (6.3,8.9)	5.8 (4.8,6.9)
2002	181	2.7	10.7	9.6 (8.2,11.1)	7.4 (6.2,8.7)
2003	133	1.9	7.8	7.2 (5.9,8.4)	5.8 (4.7,6.9)
2004	169	2.3	9.9	8.9 (7.6,10.3)	7.2 (5.9,8.4)
2005	182	2.5	10.6	9.4 (8.0,10.8)	7.2 (6.0,8.4)
2006	178	2.4	10.2	9.0 (7.6,10.4)	7.0 (5.8,8.2)
2007	163	2.1	9.3	8.3 (7.0,9.6)	6.5 (5.4,7.6)
2008	193	2.3	10.9	9.2 (7.8,10.5)	7.0 (5.8,8.1)
2009	172	2.0	9.6	8.3 (7.0,9.6)	6.3 (5.2,7.4)

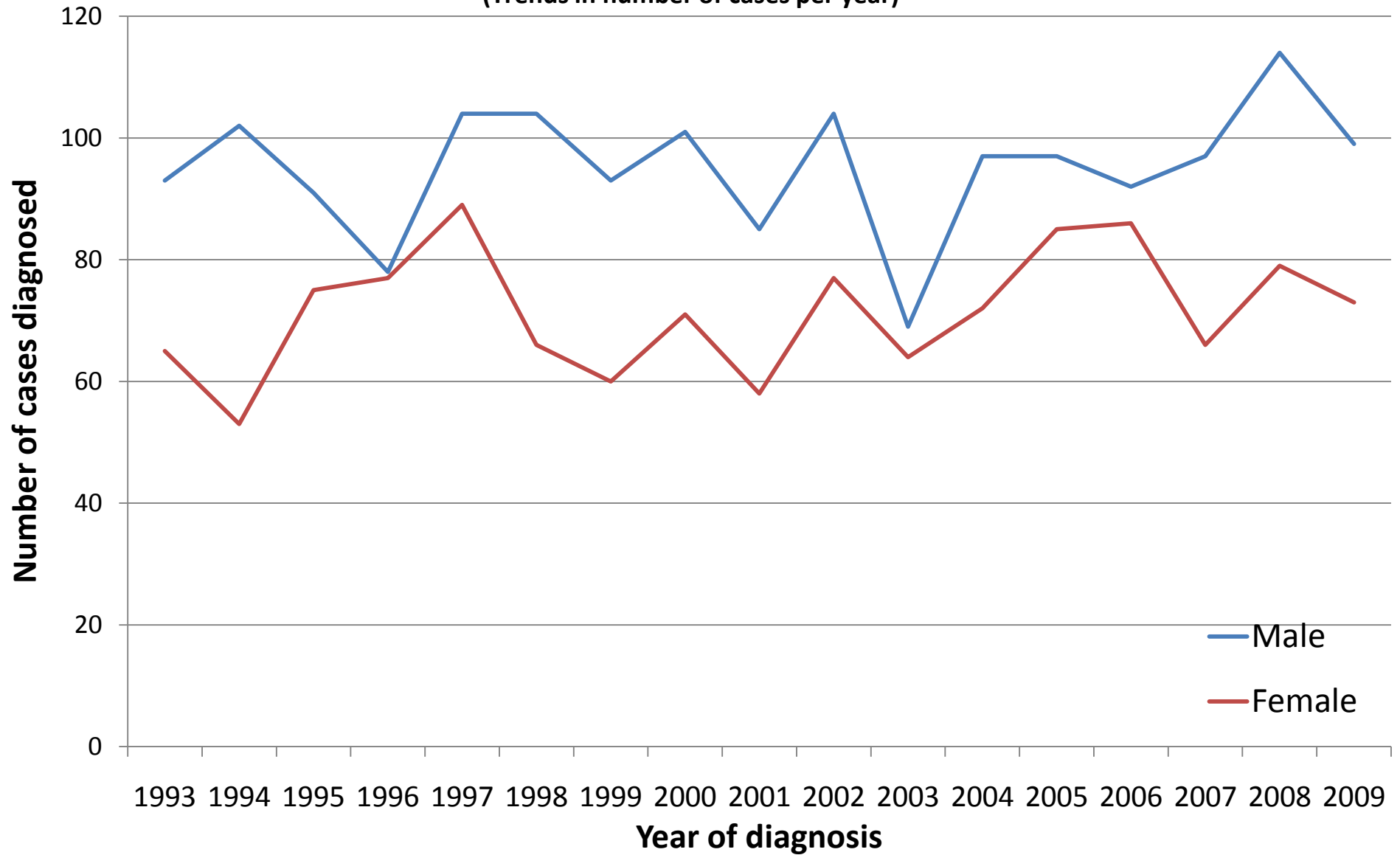
**NOTES:**

NMSC: Non-melanoma skin cancer

CI: Confidence interval

# Leukaemia (C91-C95)

(Trends in number of cases per year)



# Leukaemia (C91-C95)

(Trends in age-standardised incidence rates)



## **NOTES**

### **European Age Standardised Incidence Rate**

The incidence rate per 100,000 persons that has been adjusted to take account of different age structures between geographic areas or time periods. This is done by adopting the European standard as a reference population. The EASIR can be considered to be the number of cases per 100,000 persons occurring in the population if the population possessed the same age structure as the European standard population.

### **World Age Standardised Incidence Rate**

As for the European age-standardised rate but using the World standard population.

### **Confidence Interval**

The range of values calculated to have a specified (usually 95%) probability of containing the true value of an observation. Thus the 95% confidence interval for a rate is the range of values within which there is a 95% probability of finding the true value for the rate.