

Number of cases and incidence rates by sex: 2005-2009

Lung (C33,C34)

Sex	Number of cases	Average number of cases per year	Percentage of all cancers ex. NMSC	Crude rate per 100,000	European age-standardised incidence rate per 100,000 (95% CI)	World age-standardised incidence rate per 100,000 (95% CI)	Odds of developing the disease before age 75 = 1 in:
Male	2,978	596	15.0	69.1	64.6 (62.2,66.9)	42.4 (40.8,43.9)	19.5
Female	2,035	407	10.4	45.4	36.2 (34.5,37.8)	24.4 (23.3,25.6)	32.7
All persons	5,013	1,003	12.7	57.0	48.5 (47.1,49.8)	32.4 (31.4,33.3)	24.8

NOTES:

NMSC: Non-melanoma skin cancer

CI: Confidence interval

Number of cases and incidence rates by sex and year of diagnosis
Lung (C33,C34)

Male

Year of diagnosis	Number of cases	Percentage of all cancers ex. NMSC	Crude rate per 100,000 males	European age standardised incidence rate per 100,000 males (95% CI)	World age standardised incidence rate per 100,000 males (95% CI)
1993	565	18.1	70.8	77.9 (71.4,84.4)	52.2 (47.7,56.6)
1994	625	20.1	77.9	87.5 (80.6,94.5)	59.2 (54.5,64.0)
1995	546	17.8	67.9	73.1 (66.9,79.3)	48.8 (44.5,53.0)
1996	552	17.5	68.1	72.9 (66.7,79.0)	48.4 (44.3,52.6)
1997	553	18.3	67.8	72.9 (66.7,79.0)	48.6 (44.4,52.8)
1998	562	18.0	68.6	71.8 (65.8,77.7)	47.7 (43.7,51.8)
1999	511	17.0	62.4	64.9 (59.2,70.6)	42.6 (38.8,46.4)
2000	517	16.5	63.0	65.5 (59.8,71.2)	43.5 (39.6,47.4)
2001	567	17.2	68.8	70.0 (64.1,75.8)	46.6 (42.7,50.6)
2002	509	15.3	61.4	61.7 (56.3,67.2)	40.7 (37.1,44.4)
2003	536	15.4	64.4	63.4 (58.0,68.8)	41.6 (37.9,45.2)
2004	593	16.6	70.9	68.0 (62.5,73.6)	44.0 (40.3,47.7)
2005	556	15.4	65.9	63.3 (58.0,68.6)	41.7 (38.1,45.3)
2006	573	15.2	67.1	63.6 (58.4,68.9)	42.1 (38.6,45.7)
2007	600	14.8	69.6	65.1 (59.8,70.4)	42.9 (39.3,46.4)
2008	656	15.7	75.3	69.0 (63.7,74.3)	44.7 (41.2,48.3)
2009	593	13.9	67.5	61.6 (56.6,66.6)	40.4 (37.0,43.7)

Female

Year of diagnosis	Number of cases	Percentage of all cancers ex. NMSC	Crude rate per 100,000 females	European age standardised incidence rate per 100,000 females (95% CI)	World age standardised incidence rate per 100,000 females (95% CI)
1993	320	10.0	38.2	34.6 (30.6,38.5)	24.2 (21.3,27.0)
1994	311	10.0	36.9	32.6 (28.8,36.4)	22.7 (19.9,25.4)
1995	331	10.4	39.2	34.2 (30.3,38.0)	23.3 (20.6,26.1)
1996	311	9.5	36.5	32.5 (28.7,36.3)	22.3 (19.6,25.0)
1997	324	9.9	37.9	32.1 (28.4,35.7)	22.1 (19.5,24.8)
1998	330	10.0	38.4	32.0 (28.4,35.6)	21.7 (19.1,24.3)
1999	359	10.7	41.7	35.3 (31.5,39.1)	23.7 (21.0,26.4)
2000	341	10.0	39.5	34.2 (30.4,38.0)	23.5 (20.8,26.2)
2001	320	9.7	37.0	31.2 (27.6,34.8)	21.2 (18.7,23.8)
2002	368	10.5	42.4	34.5 (30.8,38.2)	23.0 (20.4,25.6)
2003	365	10.2	42.0	34.7 (31.0,38.4)	23.9 (21.2,26.6)
2004	372	10.2	42.6	33.8 (30.2,37.4)	22.5 (20.0,25.1)
2005	394	10.8	44.8	35.6 (31.9,39.3)	23.8 (21.2,26.4)
2006	370	9.9	41.7	33.6 (30.0,37.2)	22.7 (20.2,25.2)
2007	422	10.8	47.0	37.9 (34.2,41.7)	25.8 (23.1,28.5)
2008	409	10.0	45.2	35.4 (31.8,39.0)	23.9 (21.3,26.4)
2009	440	10.5	48.3	38.2 (34.5,42.0)	25.9 (23.3,28.5)

All persons

Year of diagnosis	Number of cases	Percentage of all cancers ex. NMSC	Crude rate per 100,000 persons	European age standardised incidence rate per 100,000 persons (95% CI)	World age standardised incidence rate per 100,000 persons (95% CI)
1993	885	14.0	54.1	52.5 (49.0,56.0)	36.0 (33.5,38.5)
1994	936	15.0	56.9	55.9 (52.2,59.6)	38.5 (35.9,41.1)
1995	877	14.1	53.2	50.5 (47.1,54.0)	34.2 (31.8,36.6)
1996	863	13.4	51.9	49.4 (46.0,52.7)	33.4 (31.1,35.8)
1997	877	13.9	52.5	49.4 (46.0,52.7)	33.6 (31.2,35.9)
1998	892	13.9	53.2	49.0 (45.7,52.3)	33.0 (30.7,35.4)
1999	870	13.7	51.8	47.5 (44.3,50.7)	31.7 (29.4,33.9)
2000	858	13.2	51.0	47.5 (44.3,50.8)	32.2 (29.9,34.5)
2001	887	13.5	52.5	47.8 (44.6,51.0)	32.3 (30.1,34.6)
2002	877	12.9	51.7	46.2 (43.0,49.3)	30.8 (28.6,32.9)
2003	901	12.7	52.9	46.8 (43.6,49.9)	31.4 (29.3,33.6)
2004	965	13.4	56.4	48.5 (45.3,51.6)	32.0 (29.8,34.1)
2005	950	13.1	55.1	47.6 (44.5,50.7)	31.7 (29.6,33.9)
2006	943	12.6	54.1	46.7 (43.6,49.7)	31.3 (29.2,33.5)
2007	1,022	12.9	58.1	49.8 (46.7,52.9)	33.4 (31.2,35.6)
2008	1,065	12.9	60.0	49.9 (46.8,53.0)	33.1 (30.9,35.2)
2009	1,033	12.2	57.7	48.3 (45.3,51.3)	32.2 (30.1,34.3)

NOTES:

NMSC: Non-melanoma skin cancer

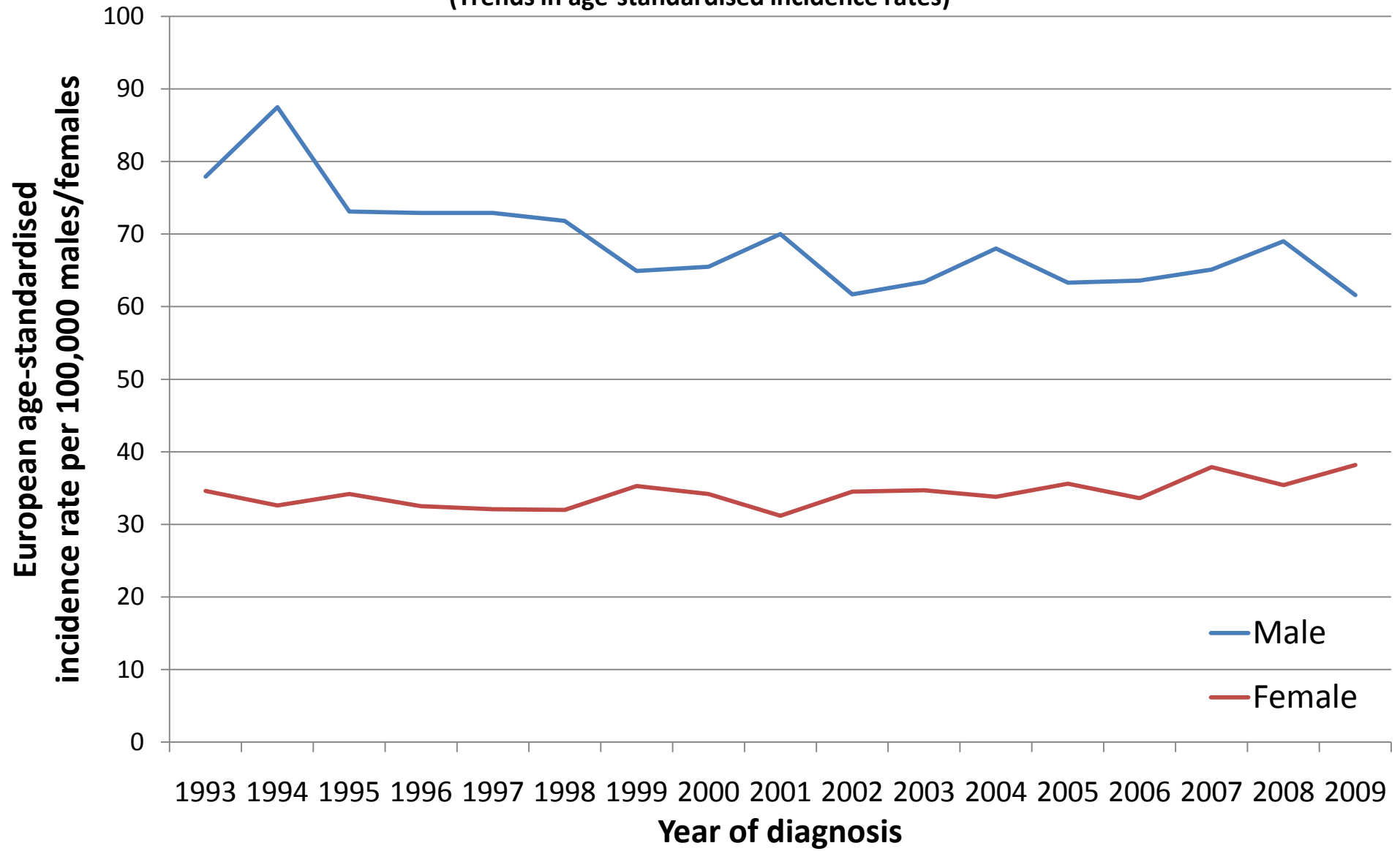
CI: Confidence interval

Lung (C33,C34) (Trends in number of cases per year)



Lung (C33,C34)

(Trends in age-standardised incidence rates)



NOTES

European Age Standardised Incidence Rate

The incidence rate per 100,000 persons that has been adjusted to take account of different age structures between geographic areas or time periods. This is done by adopting the European standard as a reference population. The EASIR can be considered to be the number of cases per 100,000 persons occurring in the population if the population possessed the same age structure as the European standard population.

World Age Standardised Incidence Rate

As for the European age-standardised rate but using the World standard population.

Confidence Interval

The range of values calculated to have a specified (usually 95%) probability of containing the true value of an observation. Thus the 95% confidence interval for a rate is the range of values within which there is a 95% probability of finding the true value for the rate.