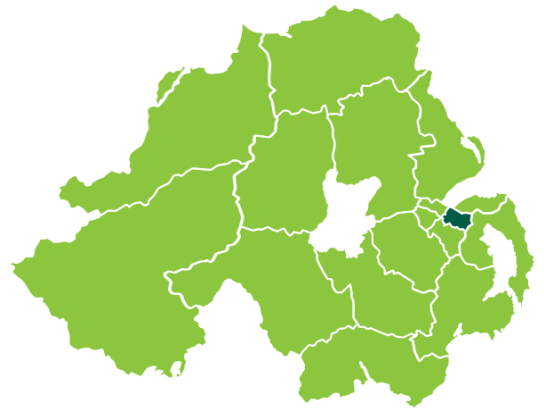


CANCER IN EAST BELFAST GP FEDERATION

Almost 1 in 4 cases (24%) of the most common types of cancer – breast, prostate, colorectal and lung – diagnosed here are in someone aged 80 or over (compared to 18% in all NI)



Cancer is more common in East Belfast GPF than in all NI.

Average cases 2011-15:

536 East Belfast GPF

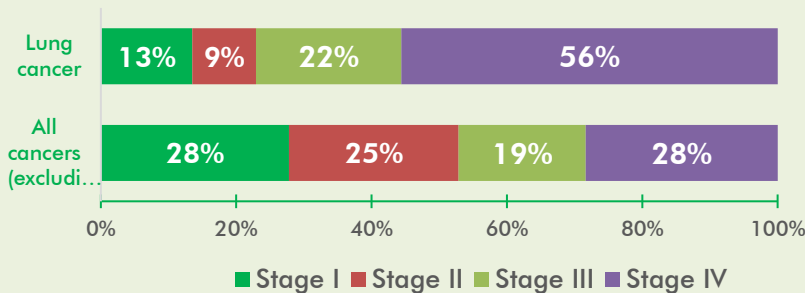
9,073 Northern Ireland



Cancers diagnosed per 100,000 people

Late diagnosis is much more likely for lung cancer than other cancers.

Known stage at diagnosis for cancers in East Belfast GPF (2011-15)



More than half of people with lung cancer were diagnosed at Stage IV (56%).

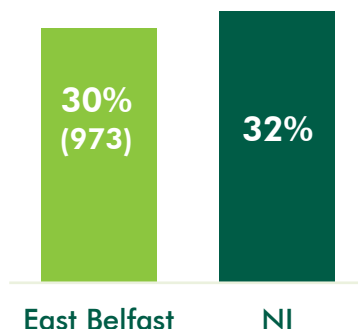
This is much higher than the rate for all of Northern Ireland (50%).

3,208 people living with cancer up to 23 years at end of 2015 (58,586 NI).

WE ARE MACMILLAN. CANCER SUPPORT



Proportion at 1-5 years since diagnosis



23-year prevalence by age (East Belfast GPF outer ring, NI inner)

