



Queen's University  
Belfast

# Academic Opportunities within the School of Pharmacy

Candidate Information  
May 2016

WE ARE QUEEN'S UNIVERSITY BELFAST  
*We are exceptional!*

# RECENT ACHIEVEMENTS

## UNIVERSITY

- Top 1 per cent of universities in the world
- A UK top ten research-intensive university (REF 2014)
- 26 of the 28 subject areas submitted to REF 2014 were ranked in the UK top 20 for research intensity
- 20th most international university in the world 2015 (Times Higher Education)
- One of only five universities in the UK to hold an Athena SWAN Silver Institutional Award
- Six Queen's Anniversary Prize Awards, the most recent for the Centre for Secure Technologies in February 2016
- Five consecutive Times Higher Education Awards, including:
  - University Fundraising Team of the Year (2012)
  - Engineering Research Team of the Year (2010)
  - Entrepreneurial University of the Year (2009)
- 94 per cent of our graduates are in employment or further study six months after graduation
- 17 Queen's subjects in the UK top 20 (Complete University Guide 2015)
- Awarded £32m in 2012 under the UK Research Partnership Investment Fund to establish a Centre for Experimental Medicine
- Institute for Global Food Security established in 2013
- William J Clinton Leadership Institute at Riddel Hall established in 2012
- Research in Ionic Liquid Chemistry named "Most Important British Innovation of the 21st Century" in the Science Museum's Initiative on Great British Innovations
- Ranked first in the UK for number of KTPs and has also received the highest number of National Awards



For pharmacy.

# WELCOME

As Pro-Vice-Chancellor of the Faculty of Medicine, Health and Life Sciences, I am delighted you are interested in academic opportunities in our **School of Pharmacy**.

Queen's makes a unique and positive impact locally, nationally and globally and, on a transformational journey over the last decade, has travelled a significant distance towards its goals. It is because of these successes that our ambition for the future continues to grow and this investment in the School of Pharmacy is an important stepping stone in the next phase in our development as a world class University.

The School of Pharmacy at Queen's had an outstanding result in REF 2014. It was placed first based on Research Intensity with the research environment within the School rated as 100% world-leading (4\*) and submitted examples of research impact rated in the maximum quality group.

In the latest (2016) edition of the 'Times and Sunday Times Good University Guide' the School of Pharmacy at Queen's is the No. 1 ranked Pharmacy School in the UK in the 'Pharmacology and Pharmacy' subject table for the second successive year.

The School is about to launch an exciting interdisciplinary research venture, focused on drug delivery and biomaterials within a clinical context. This is an interdisciplinary and cross-faculty programme, bringing together leading expertise in pharmaceutical science and practice with complementary strengths in chemistry, materials, engineering and biology. The research focus is on the design, engineering and manufacture of advanced delivery systems and devices, and the 'smart' materials which, together with patient-focused technologies, will allow existing and future medicines and medical devices to be used more safely, effectively and economically. Our ambition is to realise this step change in healthcare technology through the creation of advanced "smart" materials which can be integrated into healthcare solutions for drug delivery, diagnosis, monitoring and theranostics.

This approach is strongly aligned with national and international strategies, both for advanced materials and healthcare. It will rely on a strong interdisciplinary culture and an ethos based on dynamic interactions between those with very diverse expertise.

Our vision is that this research programme will lead to the development of a new, multidisciplinary Global Research Institute in our University based on pharmaceutical, materials and nano sciences.

Backed by significant University investment in people and infrastructure, this is an exciting time for the School of Pharmacy. We are looking for world-leading academics to join us and help this vision become a reality.

I am looking forward with great energy and enthusiasm to taking our plans forward. If you share our vision and have the experience, skills and passion we are looking for, I encourage you to apply and to join us on our exciting journey.

## Professor Chris Elliott

Pro-Vice-Chancellor of the Faculty of Medicine, Health and Life Sciences



# CONTENTS

Executive Summary	5	School of Pharmacy	12-14
Our Vision and Strategic Objectives	6	Staff Profiles	15
Queen's University: Linking Northern Ireland to a Global Community	7-8	Academic Opportunities in School of Pharmacy	16
Queen's and Northern Ireland	9	How to Apply	17
Management Structure	10-11	Key Documents	18





## EXECUTIVE SUMMARY

Queen's is one of the leading universities in the UK and Ireland, with a distinguished heritage and history. With an annual turnover of some £300m, over 23,000 students and 3,700 staff, Queen's plays a unique leadership role in Northern Ireland. As a member of the Russell Group of UK research-intensive universities, Queen's combines excellence in research and education with a student centred ethos.

In March 2014, Professor Patrick Johnston took up the position of President and Vice-Chancellor. Under his leadership, the University has developed Vision 2020 which was approved by Senate in October 2014. The vision for Queen's is the development of a world class international university that supports outstanding students and staff, working in world class facilities, conducting leading-edge education and research, focused on the needs of society.

## OUR VISION AND STRATEGIC OBJECTIVES

The Vision for Queen's is to be a world class **international** university that **supports outstanding students and staff**, working in world class facilities, conducting leading-edge education and research, **focused on the needs of society**.

The 2011-16 Corporate Plan identifies four strategic priorities as set out below:

- To offer an exceptional student experience and high quality education, leading to distinctive graduates with a sense of pride in their University
- To enhance internationally recognised, globally competitive and sustainable research areas
- To grow an efficient, effective and sustainable enterprise
- To develop global citizens and address global challenges, that will enrich the community and enhance the global reputation of the University and Northern Ireland

In October 2014, Vision 2020 was approved by Senate and marked the beginning of a new phase in Queen's journey. Underpinning Vision 2020 is the development of an ambitious culture that seeks to embrace collective leadership, innovation, transparency and an adaptive approach to change

Our Vision is shaped by a number of principles:

- Developing a culture of integrated, empowered and enabled leadership
- Becoming more financially independent and growing in key priority areas, including research income and postgraduate and international student numbers
- Developing and implementing Academic Standards that align with Vision 2020

- Creating empowered and accountable Faculties
- Facilitating and enabling inter-disciplinarity and a collaborative approach to delivery
- Creating a Graduate School and growing a strong and vibrant postdoctoral community
- Enhancing our positive impact on society





## QUEEN'S UNIVERSITY: LINKING NORTHERN IRELAND TO A GLOBAL COMMUNITY

The successful candidates will join a university that has a rich and distinguished heritage and holds a special place in the history of education, research and innovation on these islands.

Queen's is a dynamic and diverse institution with over 600 international staff, from more than 75 different countries, engaged in a variety of roles across the campus.

The University was established in 1845 as part of the federal Queen's University of Ireland with Colleges in Belfast, Galway and Cork, and was awarded independent degree awarding powers in 1908 when it became a university in its own right. It is one of the oldest universities in the UK: only nine can claim longer lineage.

Today, Queen's is a dynamic, innovative 21st century institution, a member of the Russell Group of the UK's 24 leading research-intensive universities, educating

students for the modern world and making a difference to people's lives. This was externally validated in 2012 when we received, from Her Majesty the Queen, the Diamond Jubilee Queen's Anniversary Prize for our leadership of the Northern Ireland Comprehensive Cancer Services Programme. This was the fifth Queen's Anniversary Prize secured by the University, the others being for Green Chemistry, Environmental Research, Palaeoecology and Law.

The University was awarded its sixth Queen's Anniversary Prize on 25 February 2016 for ground breaking cyber security work at the University's Centre for Secure Information Technologies.

Five prestigious Times Higher Education Awards further recognise the University's contribution to society. These accolades reflect Queen's spirit of innovation and invention.

From new treatments for life-threatening diseases to protecting the lives and livelihoods of some of the poorest people on the planet, the University's research impacts on society around the globe. Its technology will provide arsenic-free drinking water for over 70 million people in South-East Asia, while the Queen's-led programme for the improvement of cancer services in Northern Ireland has resulted in the creation of a comprehensive cancer centre and significantly improved rates of cancer survival.

Queen's work in green chemistry, in partnership with Fortune 500 company Petronas, is revolutionising the chemical processing industry around the world. In the arts, the Seamus Heaney Centre for Poetry, home to many leading contemporary poets, underpins the University's reputation as a world literary force.



Global networks are critical to Queen's future success. Its researchers work closely with universities around the world and the University is committed to enhancing these links still further.

Amongst its dynamic partnerships are academic links with leading institutions in India, Malaysia, and the Americas. Queen's has recently established China Medical College - Queen's University Joint College (CQC), a joint venture to deliver cutting-edge education in Pharmaceutical Sciences, based in Shenyang. This year Queen's announced that in partnership with Dubai Healthcare City (DHCC), the world's largest healthcare free zone, they will develop the Mohammed Bin Rashid University of Medicine and Health Sciences (MBR-UMHS) and its College of Medicine.

Entrepreneurship is the lifeblood of Queen's. More than 60 businesses have emanated from the University's

cutting-edge research, generating over 1,500 high-value jobs. Queen's is ranked No.1 in the UK for its participation in Knowledge Transfer Partnerships, which enables small and medium sized enterprises to access the skills and expertise within academic institutions.

Our students, recruited from more than 80 countries, create an environment in which enterprise can flourish, and Queen's graduates are much sought after by all employers, including blue-chip companies and firms in the City of London.

Our annual impact on the Northern Ireland economy is £850m and our impact on society is immeasurable. Our researchers address global challenges, whilst our students gain the skills which are necessary to underpin future economic growth.

Our graduates are role models at home and ambassadors for Northern Ireland abroad. Among our alumni we number two Nobel laureates – the politician David Trimble and the late poet, Seamus Heaney. Both also served as members of staff. We are also proud of our Queen's graduate John Stewart Bell, widely regarded as one of the most influential scientists of the twentieth century. The former Irish President, Mary McAleese, was a Queen's Pro-Vice-Chancellor when she was elected to office.



# £350M

OVER THE PAST TEN YEARS, QUEEN'S HAS INVESTED £350M IN ITS CAMPUS, GENERATED 7,000 CONSTRUCTION-RELATED JOBS AND PUT £1BN INTO THE WIDER ECONOMY



## QUEEN'S AND NORTHERN IRELAND

Belfast is the capital of Northern Ireland and is one of Europe's most friendly and fashionable regional cities. Described by Lonely Planet as a 'must-see visitor destination', it was also voted one of the world's top 10 destinations by National Geographic Traveller in 2012.

Northern Ireland is renowned for its beautiful beaches and coastal scenery, including the Giant's Causeway, a World Heritage site. It has a fascinating history and cultural heritage and prides itself on many 'firsts', including having built the Titanic.

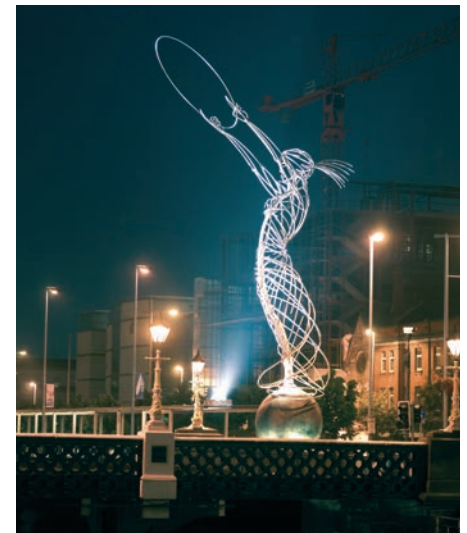
Many visitors to Northern Ireland have chosen to make the region their home.

People from all over the world are now making an important contribution to life here – in medicine, business, industry, and education.

Travelling to and from Northern Ireland is both easy and economical. Most major British cities are within an hour's flying time from Belfast's two regional airports, which are both easily accessible from the University. These airports provide flights from many locations in the UK and mainland Europe as well as North America.

Belfast has regular ferry services from Scotland and England, and Dublin is just a two-hour train journey away.

Queen's University is proud to be a driving force in Northern Ireland's cultural, artistic and economic renaissance, celebrating the innovation and creativity of its people and enhancing its reputation as an international centre of learning.



## MANAGEMENT STRUCTURE

Professor Patrick Johnston took up the position of President and Vice-Chancellor, on 1 March 2014. A revised management structure has been developed as part of Vision 2020 to support and facilitate the delivery of this challenging new Vision.

The President and Vice-Chancellor is supported by the Registrar and Chief Operating Officer and also by three Pro-Vice-Chancellors, each with defined policy portfolios, as outlined below.

### 1. Education and Students

Education strategy; teaching and learning; quality assurance and related issues for all education and skills activities; employability strategy; widening participation; library, computing and other relevant academic services; student services.

2. International strategy and leadership; international culture and branding; international collaborations; institutional responsibility for public engagement and social charter.

### 3. Research and Postgraduates

Research strategy; research quality management; postgraduate strategy. Overall responsibility for issues relating to postgraduate research and taught students.

There are 20 Schools within three Faculties and as part of the review of the structure set out in Vision 2020, the Faculties are led by Faculty Pro-Vice Chancellors (PVC) who will be supported by the Faculty Director of Operations and a professional support team embedded within the Faculty and the Faculty Executive Board (FEB).

The President and Vice-Chancellor chairs the University Executive Board (UEB), which is responsible for developing the Corporate Plan, as well as approved strategies to support its delivery. Membership of the UEB, which reports directly to the Planning and Finance Committee, is made up of the Registrar and Chief Operating Officer, the portfolio and Faculty Pro-Vice-Chancellors and the Director of Finance.

The Registrar and Chief Operating Officer is the head of a unified administration, responsible for managing, leading and co-ordinating the provision of a comprehensive range of professional support services. These integrated professional services are delivered through eight Directorates.

The Registrar and Chief Operating Officer chairs the University Operating Board (UOB), which is responsible

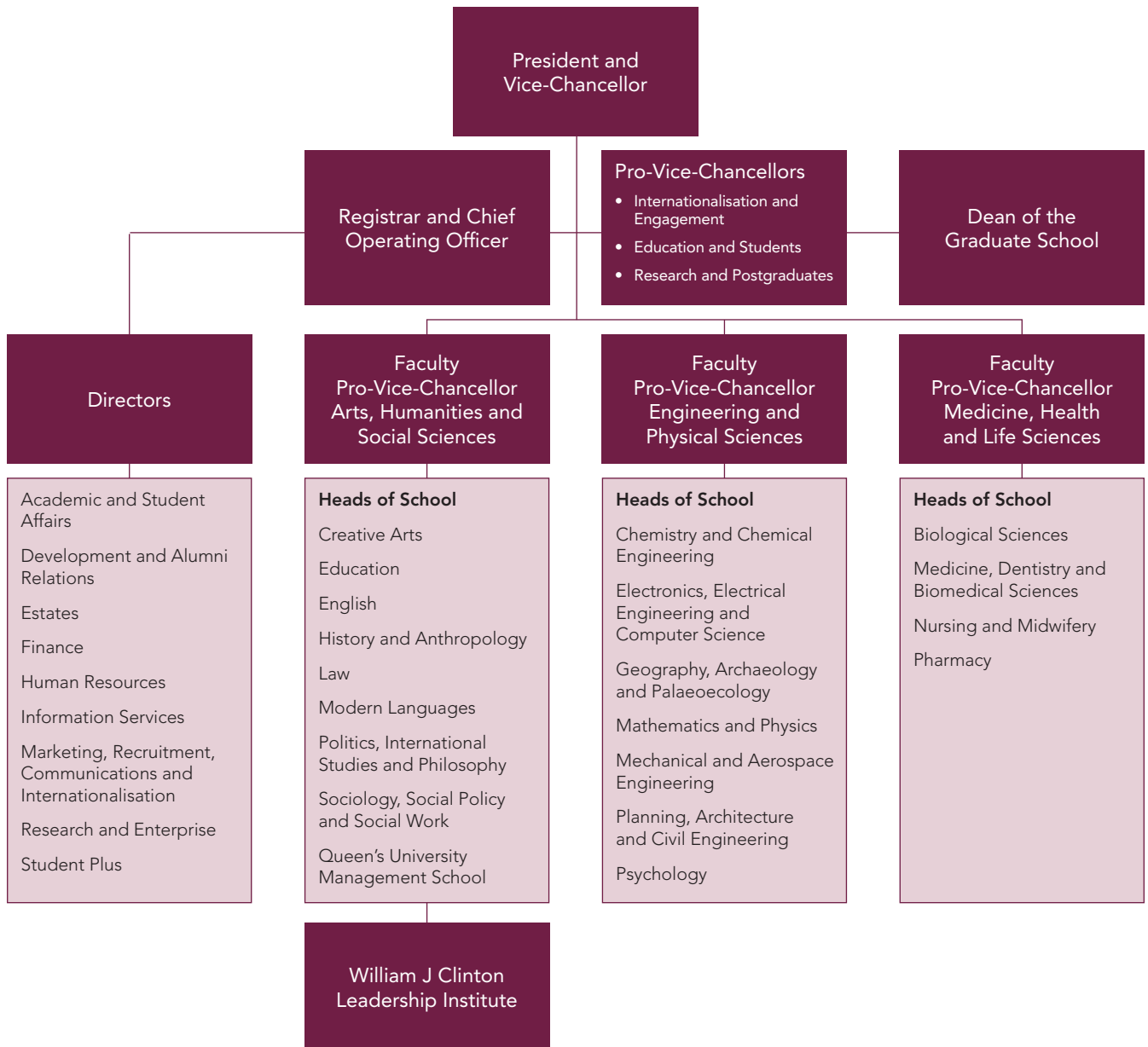
for overseeing the implementation of all University strategies and policies. Membership of the UOB, which reports directly to the UEB and the Planning and Finance Committee will comprise of the newly appointed Faculty Pro-Vice Chancellors and the eight Professional Services Directors.

Three Faculty Executive Boards are chaired by the relevant Faculty Pro-Vice-Chancellor, and membership comprises of the Faculty Director of Operations, the Heads of School and other academic leadership positions within the Faculty such as Deans of Research, Education, Internationalisation, Innovation and Impact. The Faculty Executive Boards are empowered to create an integrated approach to planning and resource allocation, to enhance accountability and performance management and to set, and deliver against, Corporate Plan targets.

The Professional Services Executive Board is chaired by the Registrar and Chief Operating Officer, and its membership includes the Professional Services Directors and the Faculty Directors of Operations. The Professional Services Executive Board will create an integrated approach to the delivery of professional services to support the delivery of Corporate Plan targets.

# 7,200

WITH 3,700 STAFF, QUEEN'S IS ONE OF THE LARGEST EMPLOYERS IN BELFAST AND GENERATES A FURTHER 3,500 JOBS ACROSS NORTHERN IRELAND



## SCHOOL OF PHARMACY

The School of Pharmacy at Queen's University Belfast is a leading centre for pharmacy education and research, nationally and internationally. As part of its continuing dynamic growth, the School is inviting outstanding individuals to apply, as appropriate, for appointment as Professor, Senior Lecturer/Reader or Lecturer in a range of research areas of relevance to the School.

### About The School of Pharmacy at Queen's

([www.qub.ac.uk/schools/SchoolofPharmacy](http://www.qub.ac.uk/schools/SchoolofPharmacy))

In 1929, a BSc degree in Pharmaceutics was founded at Queen's University Belfast, making it one of the oldest pharmacy degree courses in the United Kingdom. Today, the modern School of Pharmacy is housed within its own buildings on the Queen's University Health Sciences Campus, adjacent to a major teaching hospital, the Schools of Medicine, Dentistry and Biomedical Sciences, and the School of Nursing.

The School of Pharmacy, with around 550 undergraduate students, offers degree programmes in Pharmacy (MPharm) and the Pharmaceutical Sciences (BSc). The accredited MPharm degree programme is recognised as a qualifying degree for registration as a pharmacist by the Royal Pharmaceutical Society of Great Britain and the Pharmaceutical Society of Northern Ireland. The BSc programme is also offered by the School in the recently established 'China Queen's College', a partnership with China Medical University in Shenyang, N.E. China. An MPhil research degree programme in Pharmaceutical Biotechnology is well established in the School, primarily for Chinese students. The School also provides Certificate, Diploma and Masters level courses in clinical pharmacy by distance learning to qualified pharmacists around the globe, and



also houses the Centre for Continuing Professional Development for Pharmacy.

The School of Pharmacy at Queen's has grown dramatically over the past 10 years, making it one of the largest Schools in the UK. There are now 39 academic staff, about 140 postgraduate researchers and 40 postdoctoral staff in the School, covering a wide range of disciplines within the pharmaceutical sciences, and in clinical and community practice. The School is international in

its outlook, with around 30% international students in its undergraduate population, and postgraduates and research staff from many different countries. There are partnerships with many national and international research groups and strong links, in particular, with leading Chinese universities.

The School has a vibrant, inclusive and entrepreneurial culture, with strong links to the local, national and international pharmaceutical and





healthcare industries. Research income is substantial, from sources including the UK Research Councils, major national and international charities such as the Wellcome Trust and the Gates Foundation, the European Union Framework programmes and the US National Institutes of Health, as well as a number of industrial programmes.

## A Leading School for Research and Education

The School of Pharmacy at Queen's had an outstanding result in REF 2014, the national assessment of research quality in the UK in which the highest research quality is graded as 4\* (world-leading) or 3\* (internationally excellent), with lower quality rankings of 2\* and 1\*. The School of Pharmacy submitted 100% of its eligible staff for assessment, one of the few schools to do so, and the submission consisted only of staff from the School.

The outcome of REF 2014 showed that 92% of the School's submitted research fell within the highest quality 4\* and 3\* categories, with 44% classed as world-leading 4\* research. This places the School of Pharmacy at

Queen's within the top 10% of the 94 submissions to REF Unit of Assessment 3 (which comprised the areas of Nursing, Dentistry, Pharmacy and Allied Health Professions). Of those submissions that were, in whole or in part, from pharmacy schools, Queen's came within the top four (based on 4\*/3\* research) and was placed first based on Research Intensity (Grade Point Average weighted by percentage of staff submitted for assessment). The research environment within the School was rated as 100% world-leading (4\*) and submitted examples of research impact were rated in the maximum quality group. Overall, the REF quality profile for the School was:

**4\*** 44%; **3\*** 48%; **2\*** 8%. For full details of the School of Pharmacy's performance

in REF 2014, please see <http://results.ref.ac.uk/Results/ByUoa/3>.

In the latest (2016) edition of the 'Times and Sunday Times Good University Guide' the School of Pharmacy at Queen's is the No. 1 ranked Pharmacy School in the UK in the 'Pharmacology and Pharmacy' subject table for the second successive year. The 'Times and Sunday Times Guide' is widely regarded as the most authoritative UK university/subject ranking guide, taking into account both teaching and research quality.

*Note for readers: the guide also includes a different subject (pharmacology) so some universities listed in the table are ranked for pharmacology rather than pharmacy e.g., Cambridge.*

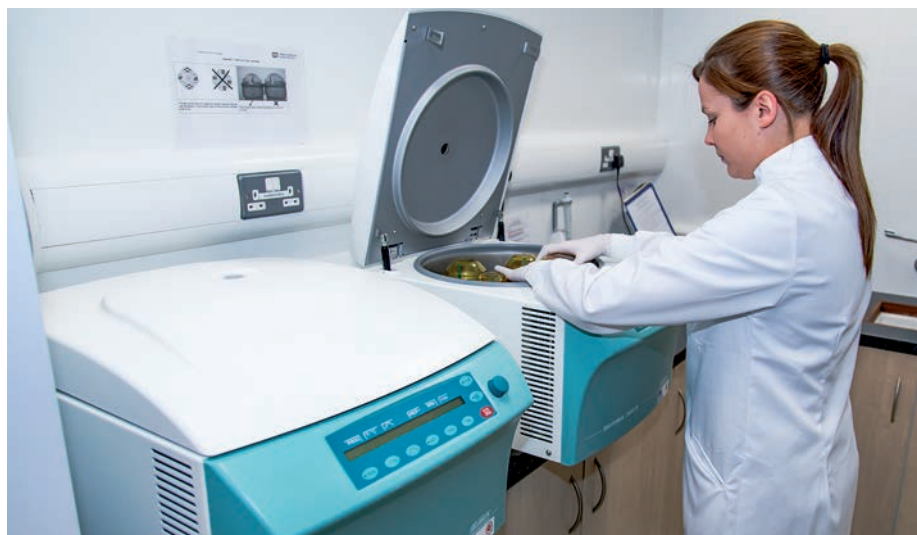
Subject rank	University	Teaching quality	Student experience	Research quality	Entry quality	Graduate prospects	Total score	Subject
1	University of Cambridge	86.00%	86.30%	52.50%	648	87.40%	100	Pharmacology
2	<b>Queen's University, Belfast</b>	<b>88.02%</b>	94.90%	<b>60.00%</b>	<b>411</b>	<b>99.50%</b>	<b>97.8</b>	<b>PHARMACY</b>
3	Cardiff University	89.80%	94.30%	36.90%	501	97.30%	97.6	PHARMACY



## Our Research Programmes

The School's research strategy is focused on developing high profile areas of research need that have attendant high priorities within funding bodies and the research-based pharmaceutical and biomedical industries. Research ranges across areas including drug delivery, biomaterials and pharmaceutical engineering, primary care and clinical pharmacy, medicinal chemistry and molecular therapeutics.

The School is about to launch an exciting interdisciplinary research venture, known as a 'Pioneer Research Programme', intended to lead to the development of a new Research institute in the university based on the pharmaceutical and related sciences. The Pioneer Research Programme is focused on drug delivery and biomaterials within a clinical context, in collaboration with the Schools of Chemistry & Chemical Engineering and Mechanical & Aerospace Engineering. This is an interdisciplinary and cross-faculty Programme, bringing together leading expertise in pharmaceutical science and practice with complementary strengths in chemistry, materials, engineering and biology to design,



engineer and manufacture advanced delivery systems and devices, and the 'smart' materials that will enable them, together with patient-focused technologies that will allow existing and future medicines and medical devices to be used more safely, effectively and economically. Our ambition is to make the step changes in healthcare technology required by creating advanced "smart" materials which can be integrated into healthcare solutions for drug delivery, diagnosis, monitoring

and theranostics. This approach is strongly aligned with national and international strategies, both for advanced materials and healthcare.

For full details of all our research programmes, please download the School of Pharmacy Research Prospectus from <http://www.qub.ac.uk/schools/SchoolofPharmacy/Research/>

Hard copies of the Prospectus are also available on request from the School.





## STAFF PROFILES

### Professor Ryan Donnelly

#### Chair in Pharmaceutical Technology

I am a Pharmacist and my research is focused on novel polymeric microneedle arrays for transdermal administration of "difficult-to-deliver" drugs and intradermal delivery of vaccines and photosensitisers. I was appointed as a Lecturer in 2004, progressing to full Professor in less than 10 years. That I have been able to do so is testament to the support and mentoring provided by senior staff in the School, as well as the excellent research facilities afforded to me.



The School has a dynamic atmosphere and high ambitions. We have a collegiate ethos, making this a great place for both young and more experienced staff to work and develop their careers. Our undergraduate students are of the highest standard and are drawn from many different parts of the world. We have excellent relationships with Universities in China and Jordan, amongst several other countries, and this has led to development of a vibrant population of international postgraduate students.

I have always found my colleagues in the School and the broader University, as well as in our local hospitals, to be very open to collaboration and sharing ideas. This has allowed me to develop translational programmes of work focussed on improving therapeutic outcomes for patients and moving the technologies developed in my lab towards the market more quickly.

### Dr Tianbao Chen

#### Reader, Functional Genomics

I was attracted to Queen's School of Pharmacy for two major reasons. Firstly, it has a dynamic bioactive peptide research group of international standing that focuses on my core research interests. Secondly, the School is consistently rated amongst the top UK Pharmacy Schools in several highly-regarded league tables.



This combination of top class research and teaching fulfilled the main criteria that my teachers in China had encouraged me to seek. I joined the School as a postdoctoral research fellow in 2004, became a lecturer in 2006 and was promoted to Senior Lecturer in 2010 and to Reader in 2012. Queen's and the School have greatly exceeded all of my expectations and I continue to be impressed by the highly professional and supportive nature afforded by my working environment.

My research colleagues have been tireless in integrating my research with theirs and in introducing me to a wide range of established international collaborators – an essential factor in establishing a personal research identity and collaborative infrastructure.

### Dr Deirdre Gilpin

#### Lecturer, CF & Airways Microbiology Research Group

I was appointed as a lecturer in the School of Pharmacy in 2012. I obtained a BSc (Hons) in Microbiology and PhD from Queen's University Belfast. My research interests have focused around the interaction between microbes and their host, and how this can result in disease. Our research group is currently involved in investigating respiratory infection in chronic lung diseases such as COPD, Cystic Fibrosis and bronchiectasis. We hope that understanding the composition and function the bacterial community in the lung will help to alleviate or cure chronic lung disease and help us use antibiotic reserves more wisely. In particular, we are investigating how chronic MRSA infection in Cystic Fibrosis is established and what influence cigarette smoke has on bacterial virulence and antibiotic resistance.



There is significant overlap between the disciplines of clinical pharmacy and microbiology, and joining the School of Pharmacy has given me a unique opportunity to move fundamental laboratory based findings towards more translational clinical research. The interdisciplinary and collegiate atmosphere within the School has provided many opportunities for new research avenues, which will ultimately result in significant improvements for people living with chronic respiratory disease.

## ACADEMIC OPPORTUNITIES IN SCHOOL OF PHARMACY

An exceptional opportunity for outstanding individuals to join a world-class centre for education and research in pharmacy and the pharmaceutical sciences

The School of Pharmacy at Queen's is rated first amongst UK pharmacy schools by the 2016 'London Times' Good University Guide and similarly rated first on the research intensity measure in the recent UK assessment of university research quality (REF 2014). As part of a major expansion programme, applications are now invited from outstanding individuals

for several academic positions at Chair, Senior Lecturer/Reader and Lecturer levels. If you match our ambition to deliver the highest quality of education and research in pharmacy and the wider pharmaceutical sciences, and if you seek to achieve beneficial impact for students and the wider society, then we would like to hear from you.

Information about the School may be obtained at [www.qub.ac.uk/pha](http://www.qub.ac.uk/pha). For informal enquiries, please contact: Dr. Heather Anderson [h.anderson@qub.ac.uk](mailto:h.anderson@qub.ac.uk).





## HOW TO APPLY

### Diversity and Equality

The University is strongly committed to equality of opportunity and to selection on merit. It therefore welcomes applications from all sections of society and particularly welcomes applications from women as females are underrepresented within the professoriate area.

Please visit [www.qub.ac.uk/jobs](http://www.qub.ac.uk/jobs) to submit your online application.

#### Apply now

16/104563 – Professor, School of Pharmacy  
<http://go.qub.ac.uk/Job-16-104563>

16/104562 – Reader/Senior Lecturer, School of Pharmacy  
<http://go.qub.ac.uk/Job-16-104562>

16/104561 – Lecturer, School of Pharmacy  
<http://go.qub.ac.uk/Job-16-104561>



## KEY DOCUMENTS

To help you learn more about Queen's University, a comprehensive range of publications is available through the links below:

- [Towards Vision 2020](#)
- [Welcome to our Future: Queen's University Corporate Plan 2011-16](#)
- [Vice-Chancellor's Annual Report 2013-14](#)
- [Financial Statements](#)
- [Our Commitment to You: Students' Union Strategic Plan 2012-15](#)
- [Together We Can Go Beyond: Fundraising Campaign](#)
- [The DNA of Innovation – Volumes 1-4](#)





