

## Short Courses Information Session

Welcome and Introduction

Overview of Modules:

- John Mackel: **Strategic Management & Leadership in Primary Care**
- Dr Noleen McCorry: **Social Model for Health & Wellbeing in Primary & Community Care**

Joanne Cregan: Insights

Valerie Reid: Application Process

Q&A



# Strategic Management & Leadership in Primary Care

5-6 Live Workshops-09.30-15.30

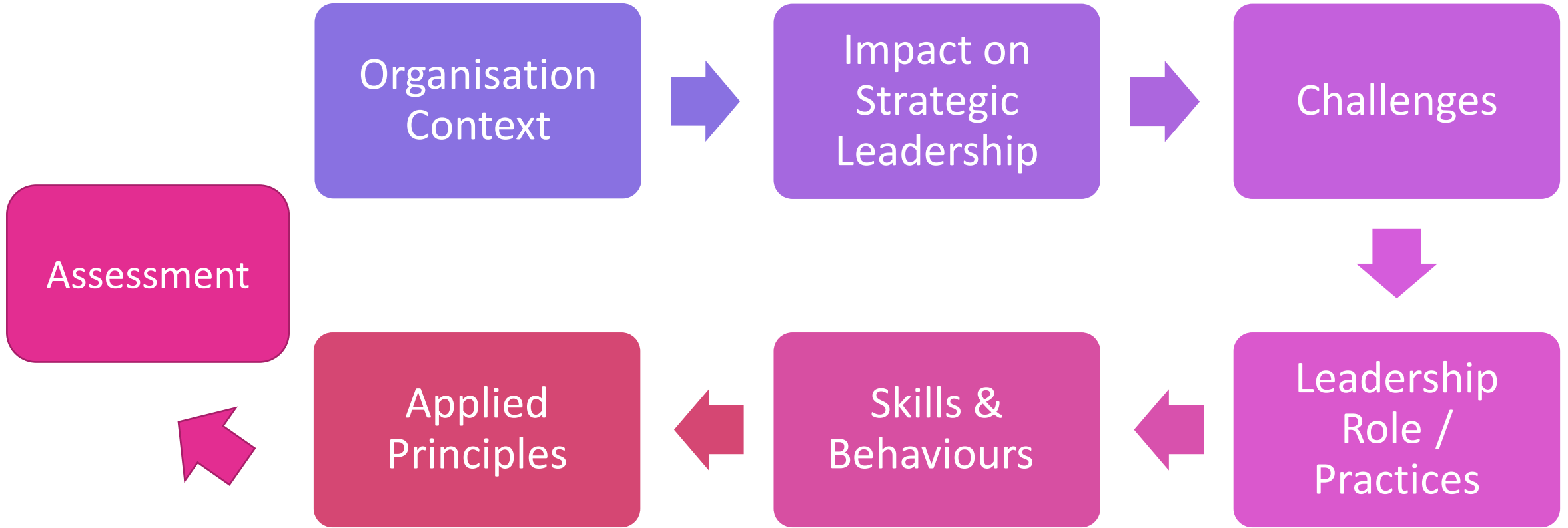
2 Assessment Reports 4000-4500 words

Strategic Leadership Unit  
701

Strategic Management Project  
Unit 712



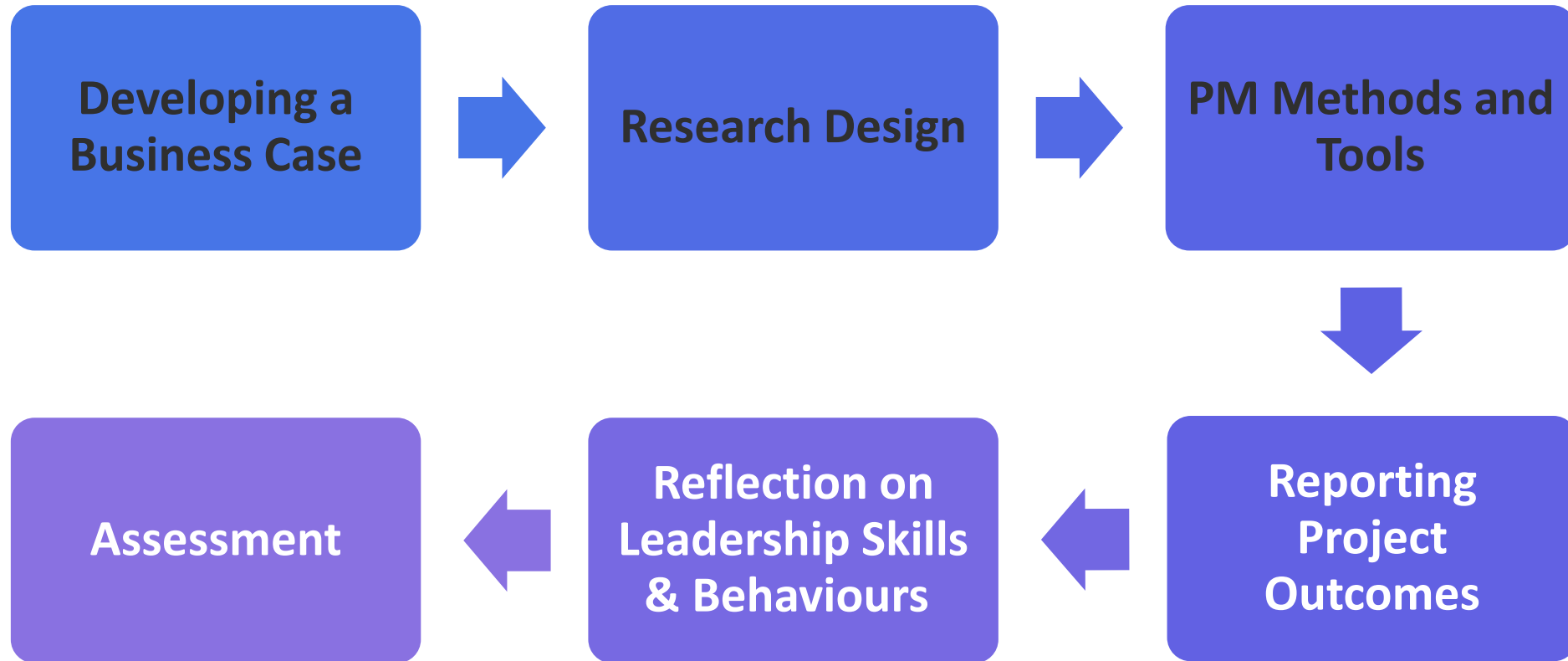
# Overview of Strategic Leadership Unit



**QUEEN'S  
UNIVERSITY  
BELFAST**

THE  
**GRADUATE  
SCHOOL**

# Overview of Strategic Management Project Unit

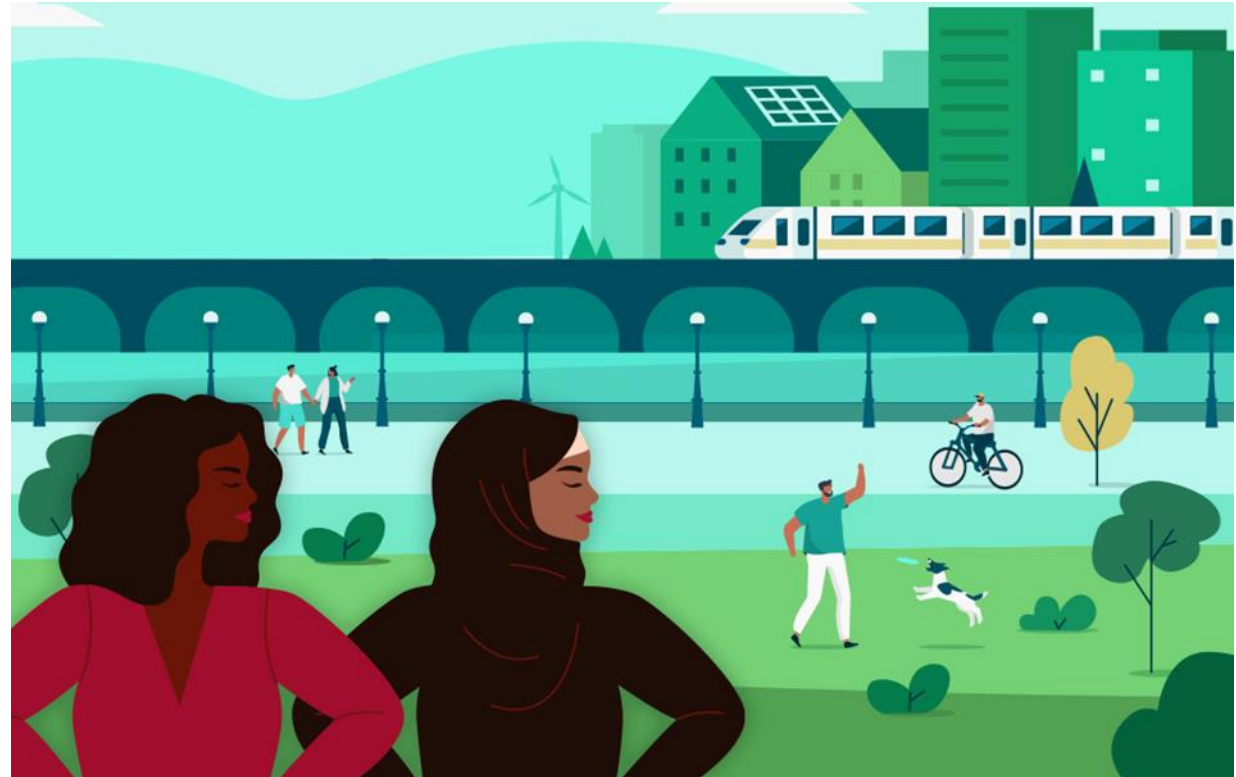


**QUEEN'S  
UNIVERSITY  
BELFAST**

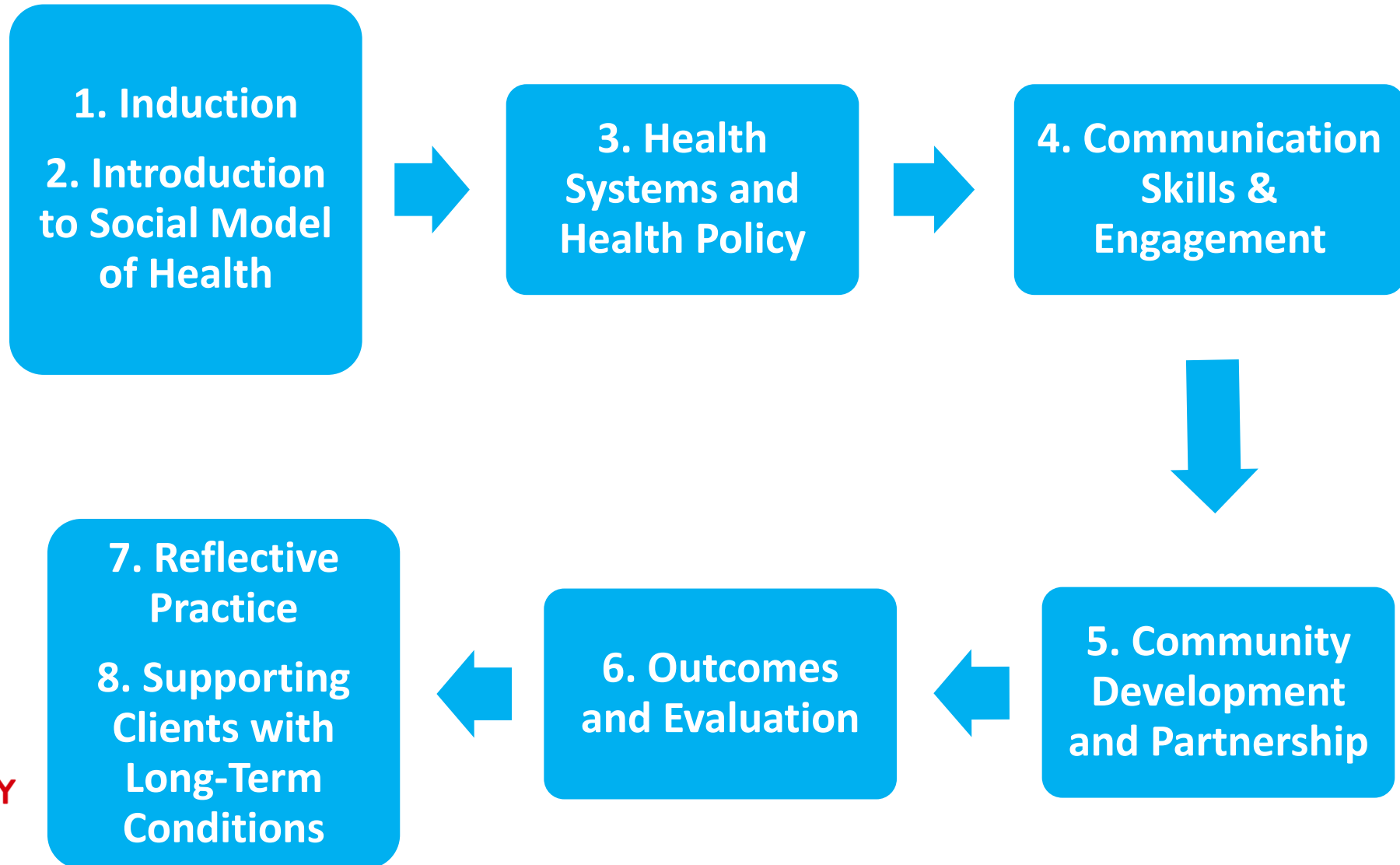
THE  
**GRADUATE  
SCHOOL**

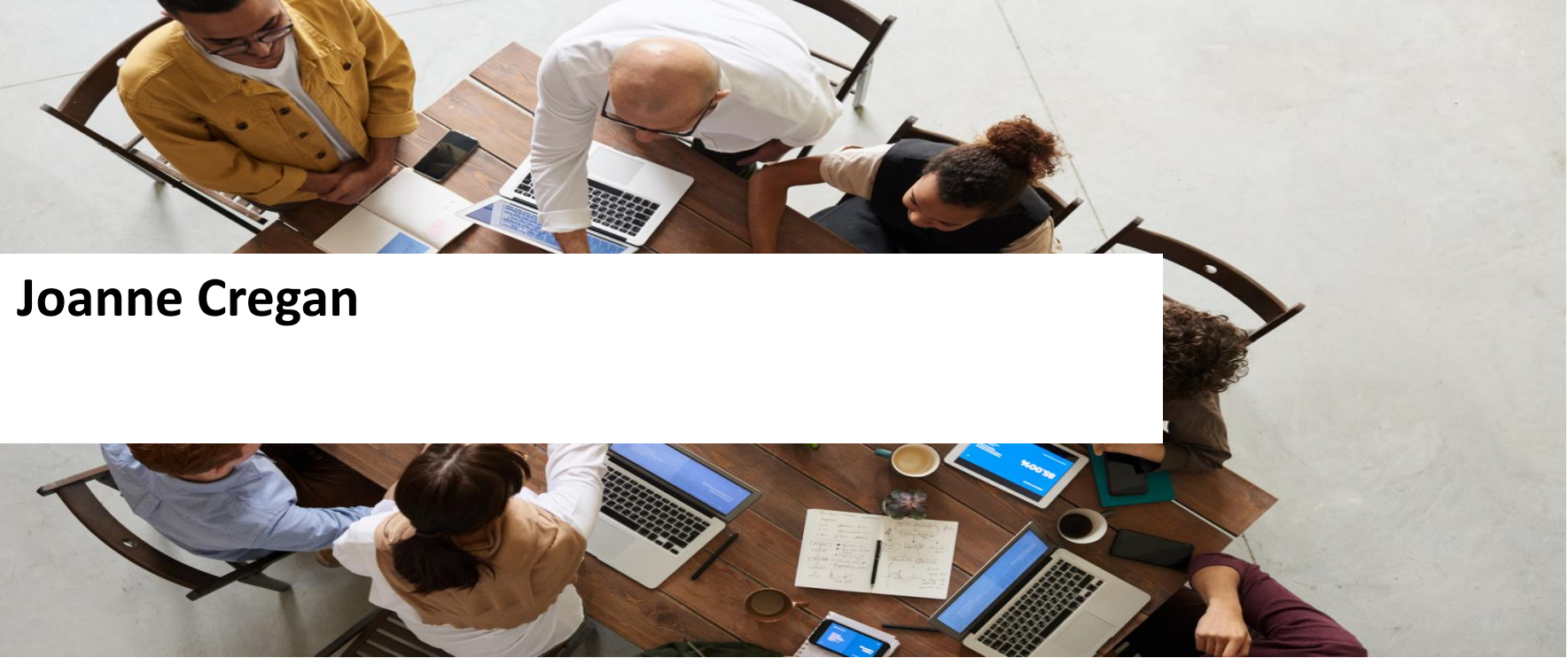
# SOCIAL MODEL FOR HEALTH AND WELLBEING IN PRIMARY AND COMMUNITY CARE

- 8 live online (3 hour) sessions, bi-weekly
- Combined didactic teaching and workshop activities
- QUB academic staff and external contributors from across health and social care settings
- Assessment via submission of final portfolio



# Social Model for Health & Wellbeing in Primary and Community Care: Overview





**Joanne Cregan**

# ADMISSIONS APPLICATION INSTRUCTIONS

## 1. Apply via Direct Application Portal (DAP)

Apply via:

[https://dap.qub.ac.uk/portal/user/u\\_login.php](https://dap.qub.ac.uk/portal/user/u_login.php)

Find out more:

<https://www.qub.ac.uk/schools/mdbs/Study/PostgraduateTaught/short-courses/>

## 2. Register/Log in

Register as a new user or log in if previously registered to undertake a course at QUB

## 3. Selecting the course

1. Choose Career – **Postgraduate Taught**
2. Choose School/Institute – **Medicine, Dentistry & Biomedical Sciences**
3. Choose Degree – **Medicine, Dentistry & Biomedical Sciences (Institutional Credit – Postgraduate Taught)**
4. In the **Additional Information box**, include title of the course and explain your interest in undertaking it.



Any Questions?



**SHORT COURSE TRAINING  
OPTIONS**



*Thank you  
for listening*