

PSYCHOLOGY

Psychology is the scientific study of behaviour and the mind: you'll study how we think and learn; how we develop and age; how we differ from one another; how we interact, collaborate and sometimes conflict with each other. You'll consider the extent to which these behaviours are influenced by both nature and nurture, and you'll also explore animal behaviour which reveals the contrasts that make us uniquely human. As you'll see, our Psychology degree is diverse and stimulating. Our graduates are confident, independent achievers who have numerous professional career pathways open to them.

COURSE CONTENT

Over the first two years of the programme, we cover a diverse syllabus, approved by our accrediting professional body, the British Psychological Society (BPS), which provides a solid foundation across the full range of Psychology's core domains:

- Biological Psychology
- Cognitive Psychology
- Conceptual and Historical Issues in Psychology
- Developmental Psychology
- Research Methods, Qualitative and Quantitative Data Analysis
- Individual Differences
- Social Psychology

Level 1

Provides a gentle introduction to Psychological theories of the core domains, research methods and the application of Psychology in everyday life. We deliver this through a variety of engaging and interactive teaching methods including lectures, small-group tutorials and practical laboratory classes.

Level 2

Builds more detailed knowledge of the core domains whilst developing critical and analytical thinking skills. Our subject specialists use a mixture of theoretical and practical teaching methods to hone the skills required to be a successful graduate.

Professional Work Placement Year Option

At the end of Level 2, you'll have the opportunity to enhance your employability and practice your psychological skills within the workplace, by taking a year-long professional work placement, working

with one of our many partners across the private, public and voluntary sectors.

Level 3

Allows you to tailor your Psychology degree according to your individual interests. Our Level 3 students choose their modules from a selection designed to explore current developments across many domains of Psychology; all delivered by our cutting-edge researchers.

Have a look at our School's website for details of current module offerings which change year-on-year. In previous years, for example, our students have looked at how we can change public behaviour using subtle "nudges"; the dark side of personality; the psychology of music; youth and political violence; and why elite sports people sometimes "choke" under pressure. For students who don't wish to take a year-long work placement before starting Level 3, we also offer our 'Insights into Graduate Employment' module. Since 2013, we have placed students with one of our many employer-partners to work on a 6-8 week project applying psychology in the workplace.

All of our students complete their degree in Psychology by submitting a research project thesis at the end of Level 3. This independent research is completed under the supervision of our expert academic staff, who will be with you every step of the way on your transition to becoming a graduate Psychologist.

Throughout your time with us, you'll develop a wide range of transferable skills which make our graduates so appealing to employers. Psychology offers an arguably unique grounding in both qualitative and quantitative research skills, meaning our graduates have



BSc Honours

Psychology 3 yrs (C800)

Entrance Requirements

A-level:

ABB + GCSE Mathematics grade C.

There are no specific subject requirements at A-level, so don't worry if you haven't studied Psychology before.

For students whose first language is not English

An IELTS score of 6.5 with a minimum of 5.5 in each test component or an equivalent acceptable qualification, details of which are available at: go.qub.ac.uk/EnglishLanguageReqs

"For anyone considering Psychology at Queen's, I would encourage you wholeheartedly to go for it. The staff, facilities and resources available won't disappoint. The biggest draw for me was the impressive staff. Most professors work on their own research while also teaching and I enjoyed the idea of being taught by world leaders that are active within the field of psychology."

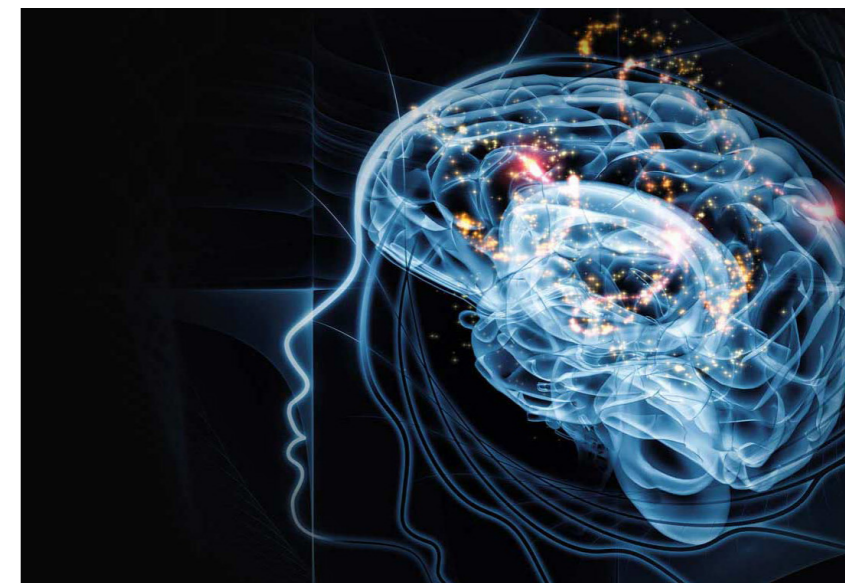
Jessica Geiger, California, USA

high verbal and numerical competencies. You'll have well developed organisation and self-management skills and be confident communicators to both small and large groups of people, using a range of media. Equipped with team-working and leadership experiences, you'll not only be able to problem solve with critical insight, but lead others to do so too. All this on top of your insights into the mind and behaviours of others, and yourself.

WHY QUEEN'S?

Research-led Teaching: the most recent Research Excellence Framework (REF 2014) placed the School among the UK's top 20 Psychology, Psychiatry and Neuroscience departments in terms of both research intensity and research impact. Our impact reflects how the School's research is informing policy makers, developing industry partnerships and ultimately touching on the lives of thousands of individuals. We're at the forefront of ground breaking research which you'll find embedded throughout our teaching.

State of the Art Facilities: we have a range of state of the art specialist equipment and laboratories where our cutting-edge research takes place. As a student, you'll have the opportunity to use many of these facilities during the research projects you'll undertake as part of your degree. For example, we have a brand new animal behaviour research lab, brain stimulation labs, virtual reality and motion-capture technology, eye-tracking devices, a child development observation lab, a postural control and aging lab and a large psychometric test library.



CAREERS

Our degree is accredited by the BPS, meaning our graduates qualify for membership of our professional society (MBPsS grade), provided the minimum standard of a 2:2 degree classification is achieved. Throughout your three years at Queen's, you'll see we have embedded employability skills and opportunities which will prepare you for the world of work after graduation.

Our Psychology graduates excel in a wide variety of careers including management consultancy, journalism, human resources, teaching, social work, marketing and accountancy to name but a few. Others complete postgraduate qualifications to become practitioner psychologists, specialising in Clinical, Educational, Health, Occupational and Sport and Exercise Psychology.

FURTHER STUDY

Further study is required to become a practitioner psychologist or academic researcher. We offer professional doctorate degree programmes in Clinical Psychology and also in Educational, Child and Adolescent Psychology, in addition to a doctoral research (PhD) programme. We also offer master's degree programmes as a stepping stone to these competitive and prestigious professional programmes – please visit our website for our current postgraduate opportunities.



The British Psychological Society
Accredited

Employability is embedded into our degree programme for all students, and has been commended by the BPS and graduate employers. Students now have the opportunity to extend this to a full year paid placement.*

*Subject to successful application to the placement programme

Entrance requirements

e: admissions@qub.ac.uk
t: +44 (0)28 9097 3838

Course information

The Secretary for BSc Psychology
School of Psychology

e: psychology@qub.ac.uk
t: +44 (0)28 9097 5445
w: psych.qub.ac.uk