



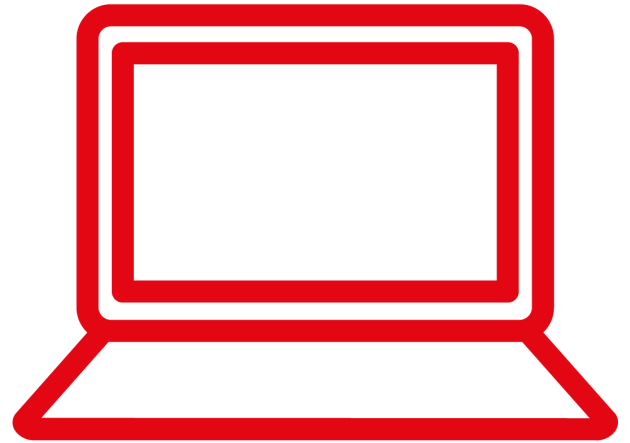
**Northern Ireland**

[www.nijobfinder.co.uk](http://www.nijobfinder.co.uk)  
[www.qub.ac.uk/careers](http://www.qub.ac.uk/careers)  
[www.irishnews.com](http://www.irishnews.com)  
[www.newsletter.co.uk](http://www.newsletter.co.uk)  
[www.jobcentreonline.com](http://www.jobcentreonline.com)  
[www.recruitni.com](http://www.recruitni.com)  
[www.nijobs.com](http://www.nijobs.com)  
[www.totaljobs.com](http://www.totaljobs.com)  
[www.indeed.co.uk](http://www.indeed.co.uk)

Health [www.hscrecruit.com](http://www.hscrecruit.com)

Education [www.eani.org.uk](http://www.eani.org.uk)

Civil Service [www.nicsrecruitment.gov.uk](http://www.nicsrecruitment.gov.uk)



**Republic of Ireland**

[www.gradireland.com](http://www.gradireland.com)

[www.qub.ac.uk/careers](http://www.qub.ac.uk/careers)

[www.irishjobs.ie](http://www.irishjobs.ie)

[www.recruitireland.com](http://www.recruitireland.com)

[www.jobs.ie/](http://www.jobs.ie/)

[www.careers4graduates.org](http://www.careers4graduates.org)

[www.jobsireland.ie](http://www.jobsireland.ie)

**UK Wide**

[www.prospects.ac.uk](http://www.prospects.ac.uk)

[www.qub.ac.uk/careers](http://www.qub.ac.uk/careers)

[jobs.theguardian.com](http://jobs.theguardian.com)

[www.targetjobs.co.uk](http://www.targetjobs.co.uk)

[www.milkround.com](http://www.milkround.com)

[www.graduate-jobs.com](http://www.graduate-jobs.com)

[www.fish4jobs.co.uk](http://www.fish4jobs.co.uk)

[www.gradcracker.com](http://www.gradcracker.com)

[www.gradplus.com](http://www.gradplus.com)

[www.monster.co.uk](http://www.monster.co.uk)

[www.indeed.co.uk](http://www.indeed.co.uk)

[www.cv-library.co.uk](http://www.cv-library.co.uk)

[www.reed.co.uk](http://www.reed.co.uk)

[www.grb.uk.com](http://www.grb.uk.com)

[www.top100graduateemployers.com](http://www.top100graduateemployers.com)

[www.bubble-jobs.co.uk](http://www.bubble-jobs.co.uk)

[www.gradintel.com](http://www.gradintel.com)

**Graduate Job Search Websites**

[www.qub.ac.uk/myfuture](http://www.qub.ac.uk/myfuture)

